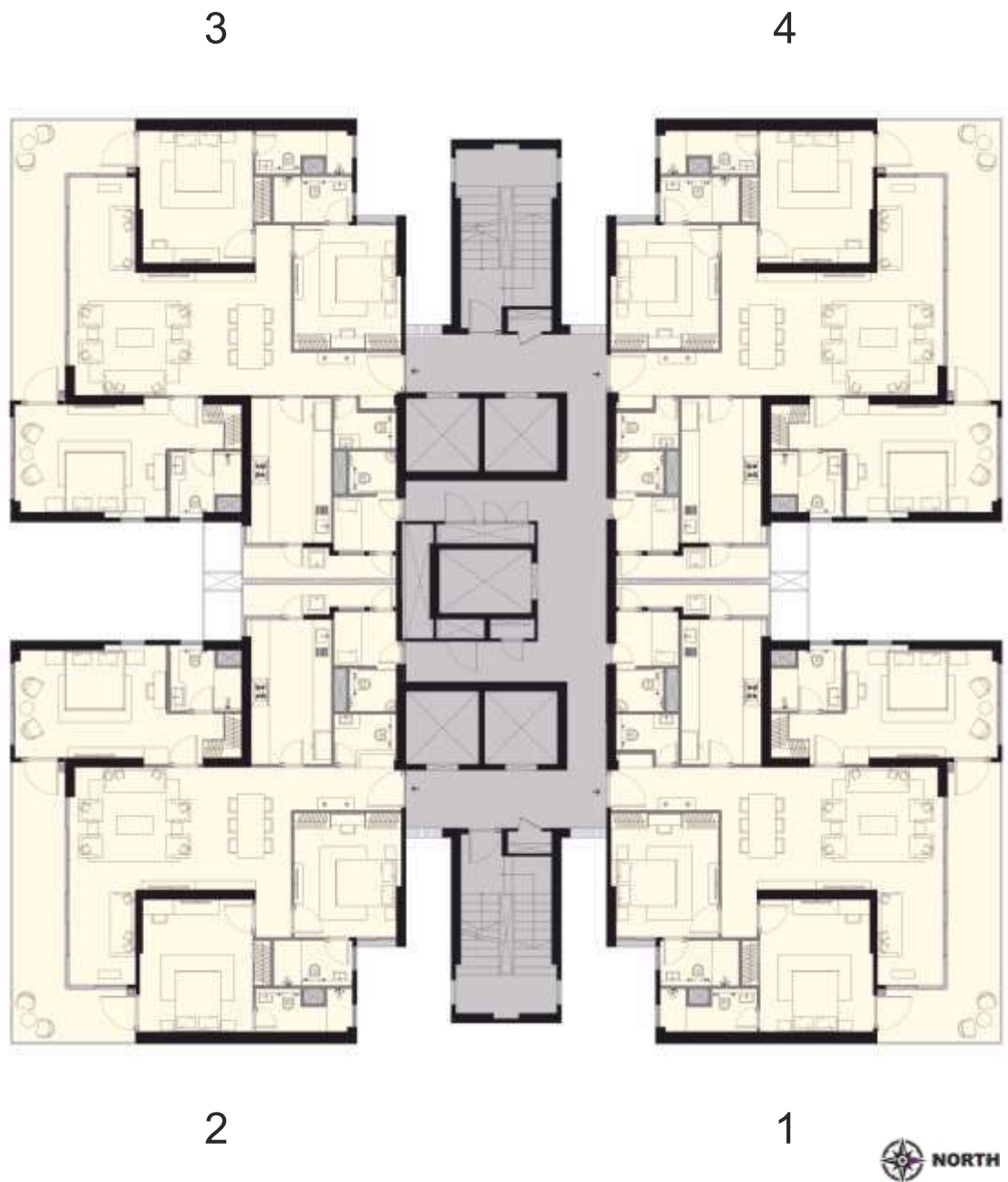
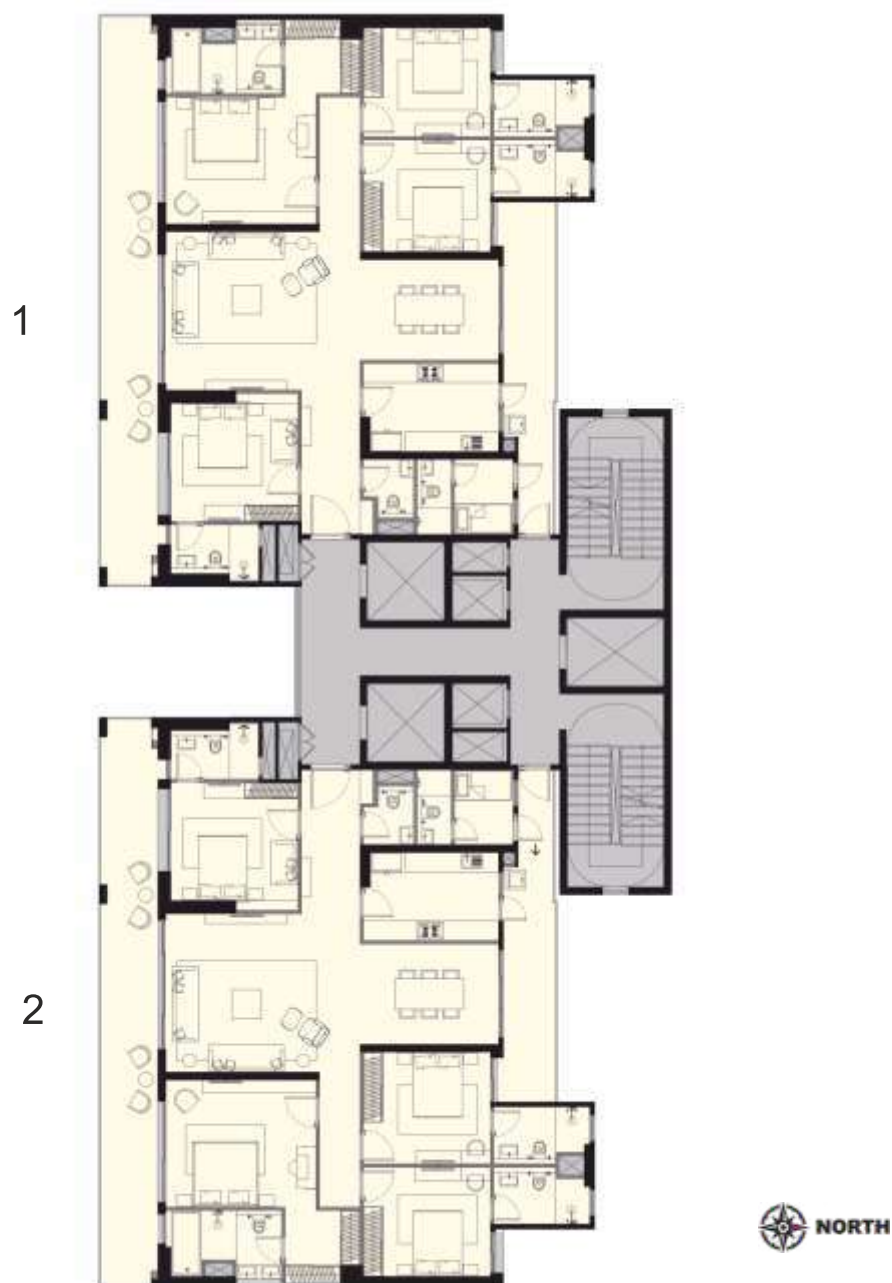


## SCHEDULE IV TYPICAL FLOOR PLAN OF TOWER - A



All areas and dimensions are tentative and subject to change till the final completion of the Said Complex as permissible under applicable laws. This floor plan contains artistic impressions and no warranty is expressly or impliedly given that the completed development of the Said Complex will comply in any degree with such artist's impression as depicted. All layouts, plans, specifications, dimensions, designs, measurements and locations are indicative, not to scale and are subject to change as may be decided by the Company or the competent authority. Soft furnishings, cupboards, furniture and gadgets, etc. are not part of the offering and are only indicative in nature and are only for the purpose of illustrating/indicating a conceived layout and do not form part of the standard specification/amenities/services to be provided.

## SCHEDULE IV TYPICAL FLOOR PLAN OF TOWER - B



All areas and dimensions are tentative and subject to change till the final completion of the Said Complex as permissible under applicable laws. This floor plan contains artistic impressions and no warranty is expressly or impliedly given that the completed development of the Said Complex will comply in any degree with such artist's impression as depicted. All layouts, plans, specifications, dimensions, designs, measurements and locations are indicative, not to scale and are subject to change as may be decided by the Company or the competent authority. Soft furnishings, cupboards, furniture and gadgets, etc. are not part of the offering and are only indicative in nature and are only for the purpose of illustrating/indicating a conceived layout and do not form part of the standard specification/amenities/services to be provided.

## SCHEDULE IV TYPE A (3BHK)

Carpet Area: 139 sq. mt. / 1,496 sq. ft.  
Balcony Area: 25.5 sq. mt. / 275 sq. ft.



All areas and dimensions are tentative and subject to change till the final completion of the Said Complex as permissible under applicable laws. This floor plan contains artistic impressions and no warranty is expressly or impliedly given that the completed development of the Said Complex will comply in any degree with such artist's impression as depicted. All layouts, plans, specifications, dimensions, designs, measurements and locations are indicative, not to scale and are subject to change as may be decided by the Company or the competent authority. Soft furnishings, cupboards, furniture and gadgets, etc. are not part of the offering and are only indicative in nature and are only for the purpose of illustrating/indicating a conceived layout and do not form part of the standard specification/amenities/services to be provided.

## SCHEDULE IV TYPE B (4BHK)

Carpet Area: 171 sq. mt. / 1,840 sq. ft.  
Balcony Area: 47 sq. mt. / 506 sq. ft.



All areas and dimensions are tentative and subject to change till the final completion of the Said Complex as permissible under applicable laws. This floor plan contains artistic impressions and no warranty is expressly or impliedly given that the completed development of the Said Complex will comply in any degree with such artist's impression as depicted. All layouts, plans, specifications, dimensions, designs, measurements and locations are indicative, not to scale and are subject to change as may be decided by the Company or the competent authority. Soft furnishings, cupboards, furniture and gadgets, etc. are not part of the offering and are only indicative in nature and are only for the purpose of illustrating/indicating a conceived layout and do not form part of the standard specification/amenities/services to be provided.

## SCHEDULE IV TYPE B (4BHK)

Carpet Area: 171 sq. mt. / 1,840 sq. ft.  
Balcony Area: 45 sq. mt. / 492 sq. ft.  
Refuge floors: 7, 15, 24, 33, 38



All areas and dimensions are tentative and subject to change till the final completion of the Said Complex as permissible under applicable laws. This floor plan contains artistic impressions and no warranty is expressly or impliedly given that the completed development of the Said Complex will comply in any degree with such artist's impression as depicted. All layouts, plans, specifications, dimensions, designs, measurements and locations are indicative, not to scale and are subject to change as may be decided by the Company or the competent authority. Soft furnishings, cupboards, furniture and gadgets, etc. are not part of the offering and are only indicative in nature and are only for the purpose of illustrating/indicating a conceived layout and do not form part of the standard specification/amenities/services to be provided.